



FAX★STAR® SMTP Mail Gateway

The Complete Messaging Solution

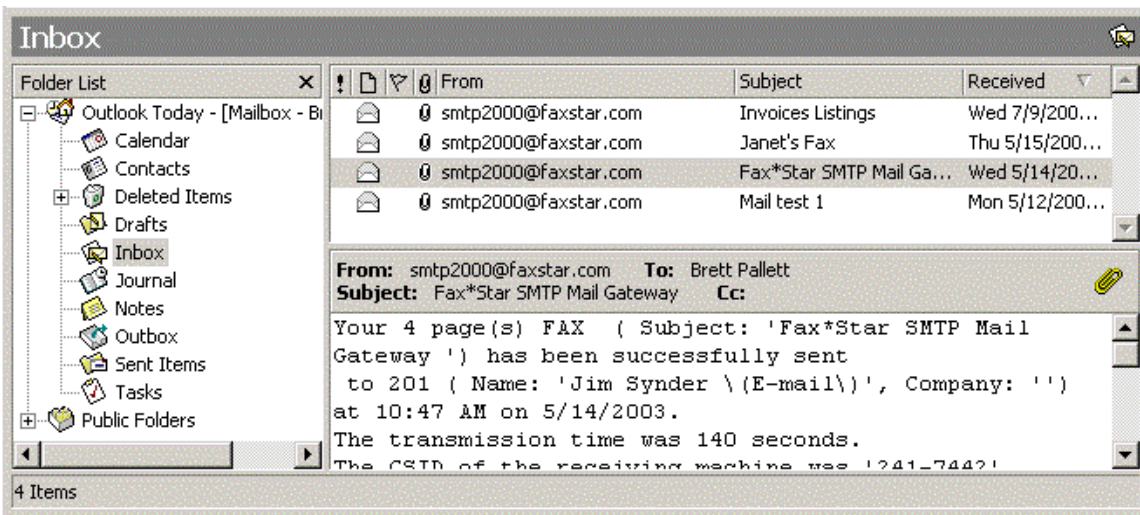
IBM Server *Proven™*

Why the Fax★Star SMTP Mail Gateway?

The Fax★Star SMTP Mail Gateway is an extension of the Fax★Star Advanced Server and Fax★Star Enterprise Server. In an SMTP environment the benefits of using the SMTP Mail Gateway are:

- ★ The Network Administrator does not need to install a specific Client on every PC, since Users are faxing from their existing SMTP email Client Application.
- ★ Users send faxes with attachments the same way they are sending mail.
- ★ Users manage fax traffic from their SMTP Mail boxes.
- ★ The document and attachment conversion from mail to fax format is done on the SMTP Mail Gateway and does not utilize the resources of the user's workstation.
- ★ The SMTP Mail Gateway can run on the Fax Server or a dedicated Server.
- ★ Works with third party software CRM / ERP packages that utilize propriety SMTP email clients and any SMTP Mail Server.

Solution Center



How does it work?

- User sends an email to ["Name@Company"<FaxNumber@MailGateway.com>].
- The SMTP Mail Gateway analyzes the attachments and verifies that they can be processed.
- The SMTP Gateway converts the document and its attachment(s) to fax format.
- The Fax★Star Server receives the faxing information and the images and performs the faxing.

Fax & Email Automation For The World
"Because Time Is Money"



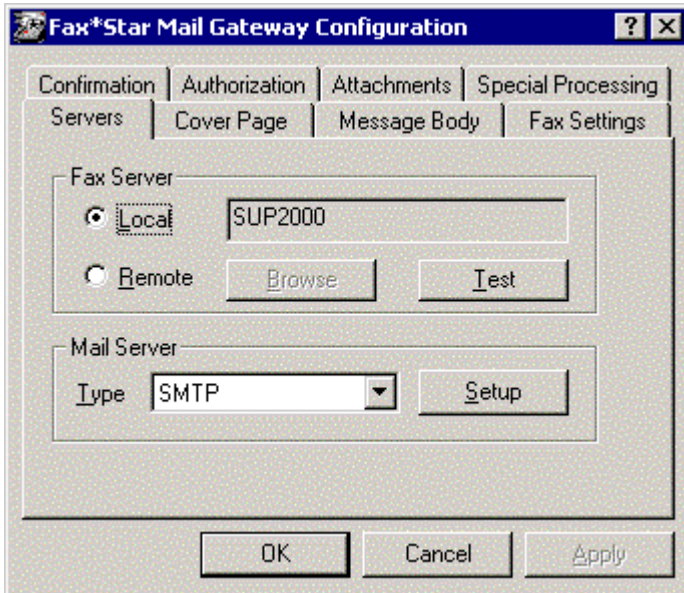


FAX★STAR® SMTP Mail Gateway

The Complete Messaging Solution

Fax★Star Mail Gateway Configuration

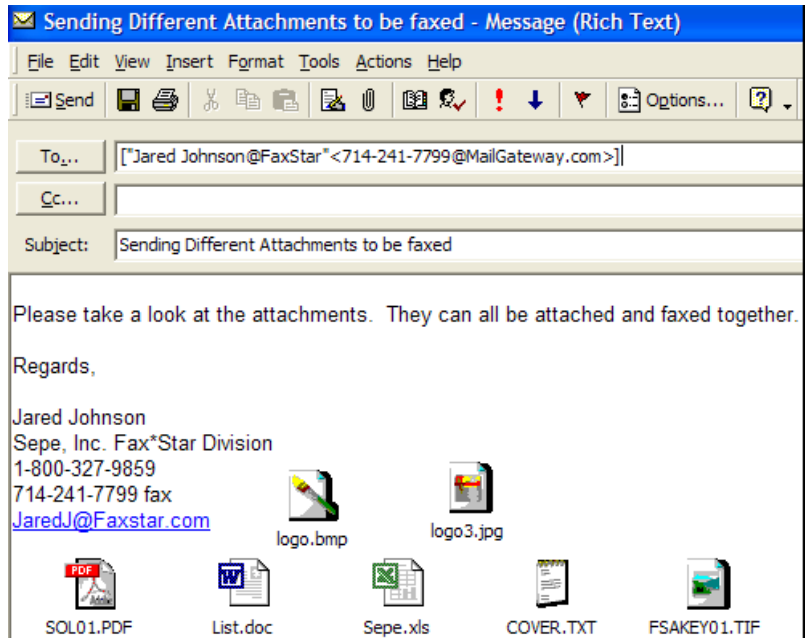
Fax★Star Mail Gateway for SMTP has a GUI configuration module for establishing the connection between a Fax★Star server and an SMTP Mail server. The SMTP server needs only to have the ability to forward internal email transmissions. The administrator can set-up what options are available for all the users that wish to fax outbound PC based documents. Cover pages, Authorized attachments, retries, and delivery of confirmation messages are all adjustable parameters.



Ability to Attach documents to Fax

Any document that can be printed on a PC (Word, Excel, etc...) can be attached to an email and faxed through the SMTP Gateway. Any person utilizing the SMTP mail server for email transmissions will have the ability to fax without installing any additional software on the client PC.

The Fax★Star Mail Gateway was designed to compliment the native capabilities of the Fax★Star Advanced Server. The Mail Gateway allows outbound PC based fax transmissions to be sent without loading any software on the client PC. The Fax★Star Advanced Server has the inherent ability to receive faxes and distribute them to users' email accounts. By coupling the Fax★Star Advanced Server with the Mail Gateway you have complete solution for all your inbound and outbound PC based faxing needs.



Fax★Star

Your Complete Fax & Email Solution

IBM Server *Proven™*

