



FAX★STAR® Lotus/Notes Mail Gateway

The Complete Fax Solution

Why the Fax★Star Lotus/Notes Mail Gateway?

The Fax★Star Lotus/Notes Mail Gateway is an extension of the Fax★Star Advanced Server. In a Lotus Notes environment the benefits of using the Lotus/Notes Mail Gateway are important:

- ★ The Network Administrator does not need to install a specific Client on every PC, since Users are faxing from their Notes Client Application.
- ★ Users send faxes with attachments the same way they are sending mail.
- ★ Users manage their fax traffic from their Lotus Notes Mail boxes.
- ★ The document conversion from mail and attachment to fax format is done on the Lotus Notes Mail Gateway and does not lock the user workstation.
- ★ The Lotus Notes Mail Gateway can run either on the Fax Server or a dedicated PC.

IBM@server™

TOOLS NETWORK

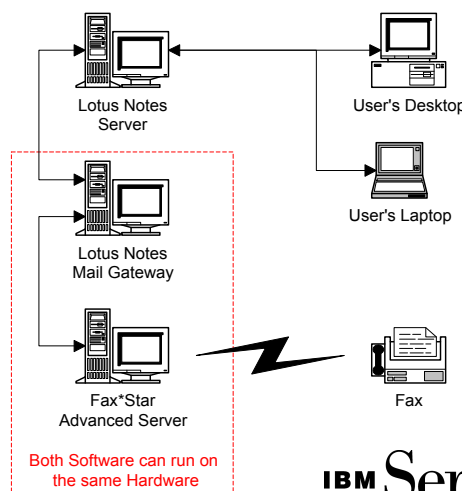
Name	Conversion Profile	Body format	Covers Page	Attempts #	Dial
✓ Cha, John	Landscape std res on legal	Text	cover page 2	2	
✓ faxstar, administrator	<System Default>	RTF	None	5	
✗ Pallett, Brett	<System Default>	Text	None	3	
✓ Steygers, Pierre	<System Default>	Text	None	3	

FAX★STAR USERS

- Abbott Labs
- ACCO Brands
- Alliant/Atlantic Foods
- Anheuser-Busch
- Coca-Cola
- C.R. England
- Discovery Channel
- Georgia Pacific
- Goodyear
- J.C. Whitney
- Jim Bean Brands
- Kraft Foods
- Nucor Steel
- Office Depot
- Urban Outfitters
- Utility Trailer
- WestPoint Stevens
- Wilson Sporting Goods

How does it work?

- User sends a document to Name@Company@fax Number@fax
- The Lotus/Notes Server moves the document to a special file and directory.
- The Lotus/Notes Gateway polls this file every few seconds and detects it has some work to perform.
- The Lotus/Notes Gateway converts the document and its attachment(s) to fax format.
- The Lotus/Notes Gateway sends a message to the Fax★Star Advanced Server to request an action.
- The Fax★Star Server receives the faxing information (schedule, priority) and the images and performs the faxing.
- When the faxing is done, the Fax★Star Server sends a confirmation message to the Lotus/Notes Gateway.
- The Lotus/Notes Gateway forwards the confirmation message to the user.



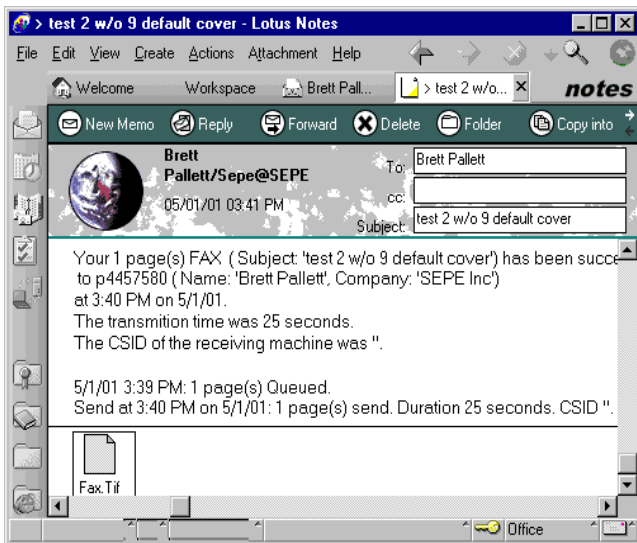
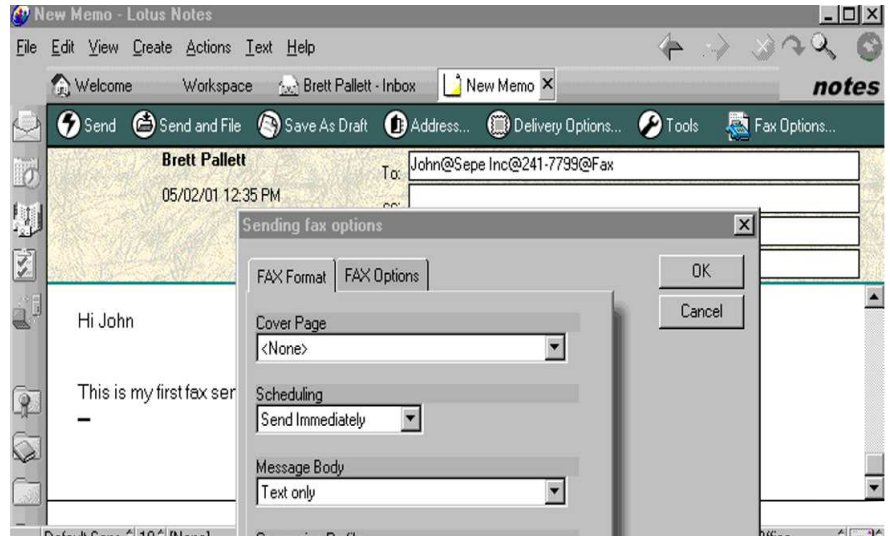
Fax Automation For The World
"Because Time Is Money"

IBM Server Proven™

Sending faxes using Fax★Star/Lotus Notes Mail Gateway

From their Notes Client Application, Users send an email to the Name@Company@Fax_Number@fax address. That's it!! They can return to their other tasks. The Fax★Star Notes Gateway then converts the message and the attached documents to fax and forwards the request to the Fax★Star Advanced Server.

Users can even Schedule the sending of their fax, add a Cover Page and a define the Body format.



The Fax★Star Advanced Server will send a message to users in their mail boxes to confirm the sending of their fax. If the fax has been correctly sent they can know the duration of the fax transmission, the CSID (Fax Identification) of the recipient and other useful information.

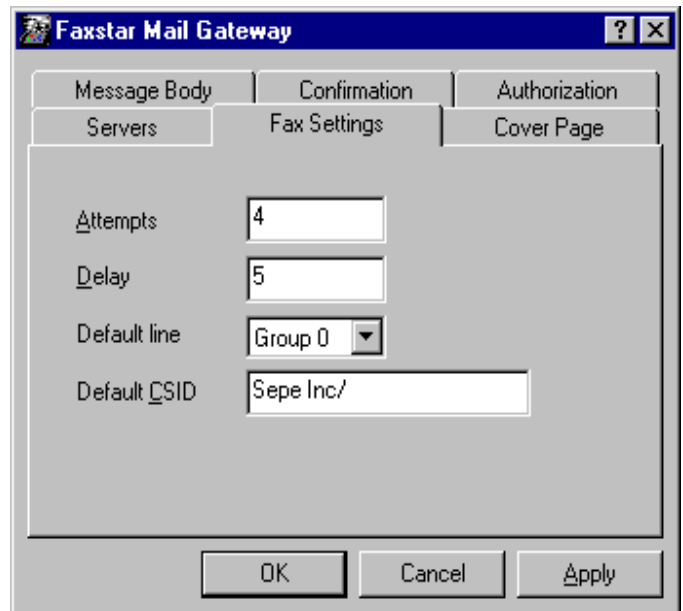
Users can display the exact contents of their fax and print it to keep a paper copy of their faxing.

IBM Server *Proven™*

The Lotus Notes Administrator using complementary Notes Forms can setup at the User level several settings, i.e.:

- * Default sending Options
- * Default Cover Page
- * Default Processing Format of Mail Body (Yes, No, Landscape, Portrait, etc.)
- * Confirmation Message Mode.
- * User rights

Fax★Star
Your Complete Faxing Solution



**For Additional detailed information regarding the Notes Mail Gateway
Contact us at (800) 327-9859 or (714) 241-7373 and INFO@FAXSTAR.COM**

Belgium

Canada

France

Germany

Holland

Spain

UK