



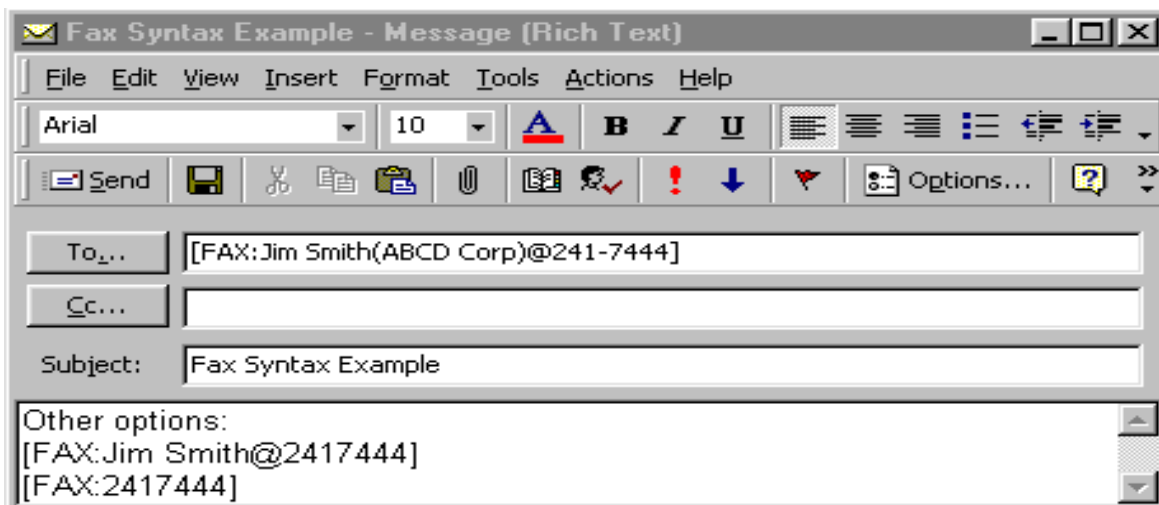
FAX★STAR® Exchange 2000/2003 Mail Gateway

The Complete Messaging Solution

Why the Fax★Star Exchange 2000/2003 Mail Gateway?

The Fax★Star Exchange 2000/2003 Mail Gateway is an extension of the Fax★Star Advanced Server. In an Exchange environment the benefits of using the Exchange 2000/2003 Mail Gateway are:

- ★ The Network Administrator does not need to install a specific Client on every PC, since Users are faxing from their existing Exchange Client Application.
- ★ Users send faxes with attachments the same way they are sending mail.
- ★ Users manage fax traffic from their Exchange Mail boxes.
- ★ The document and attachment conversion from mail to fax format is done on the Exchange Mail Gateway and does not utilize the resources of the user's workstation.
- ★ The Exchange Mail Gateway can run on the Fax Server or a dedicated Server.



FAX★STAR USERS

Abbott Labs
 ACCO Brands
 Alliant/Atlantic Foods
 Anheuser-Busch
 Coca-Cola
 C.R. England
 Discovery Channel
 Georgia Pacific
 Goodyear
 J.C. Whitney
 Jim Beam Brands
 Kraft Foods
 Nucor Steel
 Office Depot
 Urban Outfitters
 Utility Trailer
 WestPoint Stevens
 Wilson Sporting

How does it work?

- User sends an email to [FAX:Name(Company)@fax Number] "Fax" address.
- The Exchange Server moves the document to a special file and directory.
- The Exchange Gateway polls this file every few seconds and detects it has some work to perform.
- The Exchange Gateway converts the document and its attachment(s) to fax format.
- The Fax★Star Server receives the faxing information (schedule, priority) and the images and performs the faxing.
- When the faxing is done, the Fax★Star Server sends a confirmation message to the Exchange Gateway.
- The Exchange Gateway forwards the confirmation message to the user.



Fax & Email Automation For The World
"Because Time Is Money"

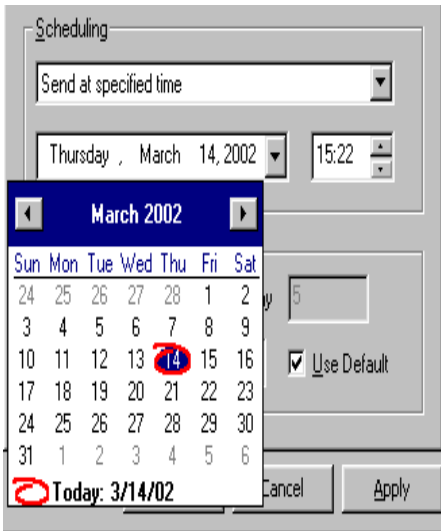


FAX★STAR® Exchange 2000/2003 Mail Gateway



Sending a fax using the Fax★Star Address

From an Exchange Client application (Outlook) users can select the Fax★Star Address Book to create fax addresses by entering the recipient name, company name and fax number. The delivery information will be automatically organized in the correct format and create a “fax address” within the Fax★Star address folder. As shown in this example, the user has the ability to enter additional recipient information. The Fax★Star will use the phone number placed in the Fax Entry. Once the entry has been created the Exchange Application will know that it is a fax and send it to the Exchange 2000/2003 Gateway. The user has the ability to add attachments to the fax messages just as with email.



Users can Schedule the sending of their fax, Preview the fax, add a Cover page, and define the Body format.

From the Exchange Client application, users can select a Cover Page, Schedule date and time for the release of the fax, and define the Body format of the fax. Users also will have the ability to Preview the fax before they release it for faxing.

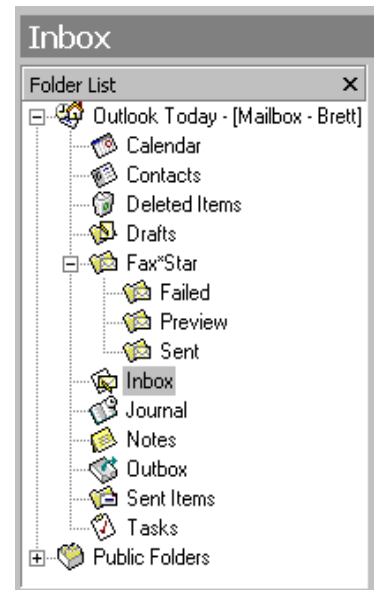
In this example, the user can select a date from the Calendar and a time for the scheduled fax to be sent.

Fax★Star Folders - Sent, Failed, and Preview Messages.

The Fax★Star Advanced Server will send a message to the users in their Exchange client mail boxes to confirm sending of their fax.

With the Fax★Star Exchange 2000/2003 Extensions the user has the ability to use the Fax★Star Folders (Failed, Preview, Sent) located on the Exchange client folder list.

If the fax has been sent, a message will be placed in the Sent folder with details of duration of fax transmission, CSID (Fax Identification) of the recipient and other useful information. If the fax failed, a message will be sent to the Failed folder with details of the failure such as line error or communication error. The user has the option to Preview the fax by having the Mail Gateway return the fax image to the Preview folder where they can review the fax and press Resend to send the fax.



Fax★Star

IBM **Server** *Proven™*