



# FAX★STAR® ADVANCED SERVER

Complete Messaging Solution

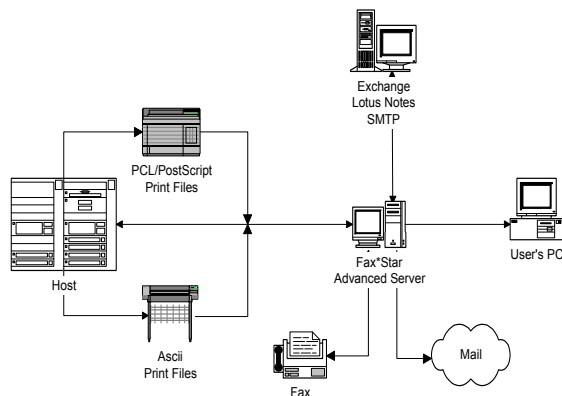
IBM Server *Proven™*

## Fax★Star® Advanced Server Features

With the new **Fax★Star® Advanced Server** you install a true modern and efficient Communications Server.

Installed on a dedicated Windows XP workstation, Fax★Star Advanced Server offers all the features you always wanted to have in a modern server:

- ✓ Send and receive faxes.
- ✓ Send Mail in PDF, Tiff, and Text formats.
- ✓ Traffic management sent to your email client.
- ✓ Interface with the main mail software in the market:
  - Lotus Notes.
  - Microsoft Exchange.
  - SMTP mail Servers.
- ✓ Fax and email from host using standard print file formats (ASCII, Epson, SCS, Text).
- ✓ Enhanced printer data stream licenses available (PCL, PostScript, IPDS).
- ✓ Send and receive faxes from any PC on the Network
- ✓ Optimize the line usage by time or day.
- ✓ Prints fax copy on any printer on the network.
- ✓ Routes incoming faxes directly to the user.



*Fax & Email Automation For The World*

## Why the Fax★Star Advanced Server Solution?

### The Fax★Star Advantage

- Advanced technology proven for over 20 years.
- Rapid return on investment.
- World wide presence
- 30 day money back guarantee.
- Service agreements.
- Easy to integrate product for any environment.
- Increase employee output and reduce labor cost.
- Eliminate fax machines and phone lines.
- 96% less expensive than sending via U.S. mail.
- 98% faster than faxing manually.
- Produced in the U.S.A.

### Technical Information

- Works with any host.
- Independent solution. No software required on host.
- Attach via Ethernet or Token Ring
- Supports TCP/IP.

### Features

- Complete solution.
- Install as quickly as any printer.
- Fax and mail from any host.
- Centralize all PC and workstation faxing.
- Receive & route inbound faxes in PDF.
- Route to users, groups, printers, servers, etc.
- Fax any Windows document.
- Lotus Notes and MS/Exchange interface.
- SMTP interface.
- Fax to any MAPI phone book recipient.
- Broadcast faxes

### Fax★Star Products

- Fax★Star Advanced Server
- Fax★Star Exchange Mail Gateway
- Fax★Star Notes Mail Gateway
- Fax★Star SMTP Mail Gateway
- Fax★Star AS/400 Solution

### FAX★STAR USERS

Abbott Labs  
 ACCO Brands  
 Alliant/Atlantic Foods  
 Anheuser-Busch  
 Coca-Cola  
 C.R. England  
 Discovery Channel  
 Georgia Pacific  
 Goodyear  
 J.C. Whitney  
 Jim Beam Brands  
 Kraft Foods  
 Nucor Steel  
 Utility Trailer  
 Office Depot  
 WestPoint Stevens  
 Wilson Sporting Goods

IBM @server™

TOOLS NETWORK



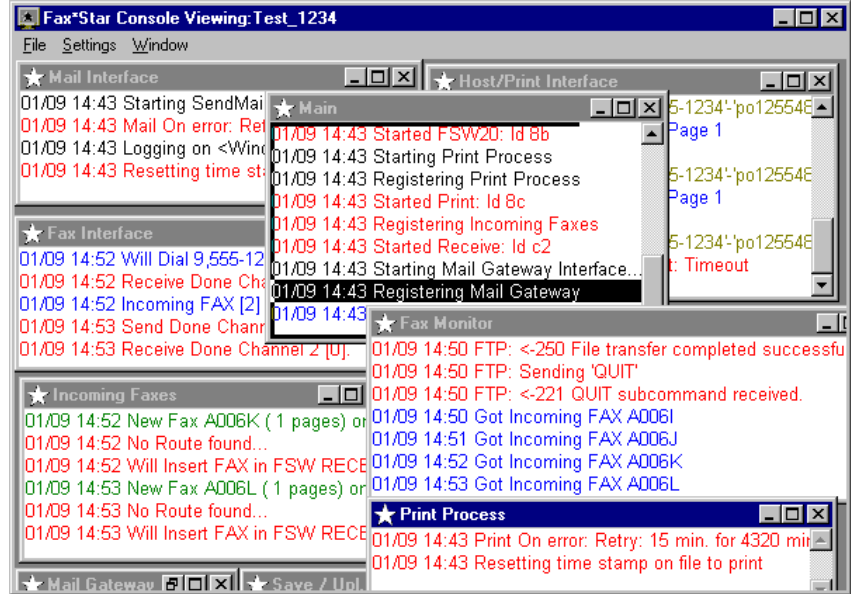
# FAX★STAR ADVANCED SERVER

IBM Server *Proven™*

From the control panel, the administrator can monitor the main Fax★Star Advanced Server components. This feature can be started from any PC on the network. The different windows display:

- The Fax traffic.
- The Mail traffic.
- The Main monitor displays any action performed by the server.
- The Printer File monitor displays every print file sent to a printer on the network.
- The incoming faxes monitor.

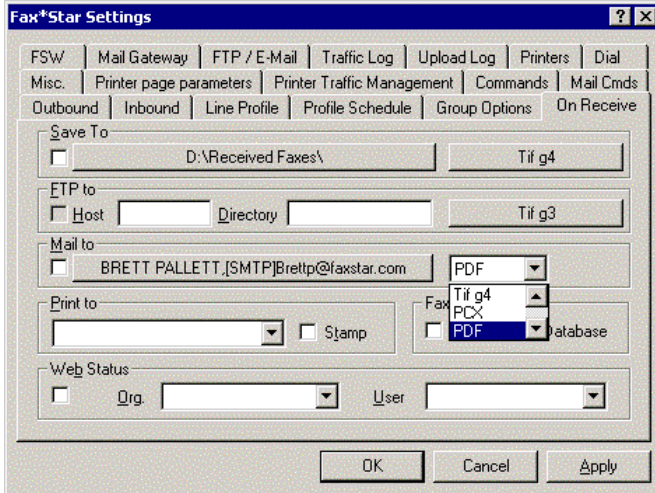
Users can select the level of data for every monitor they wish to see in the corresponding window.



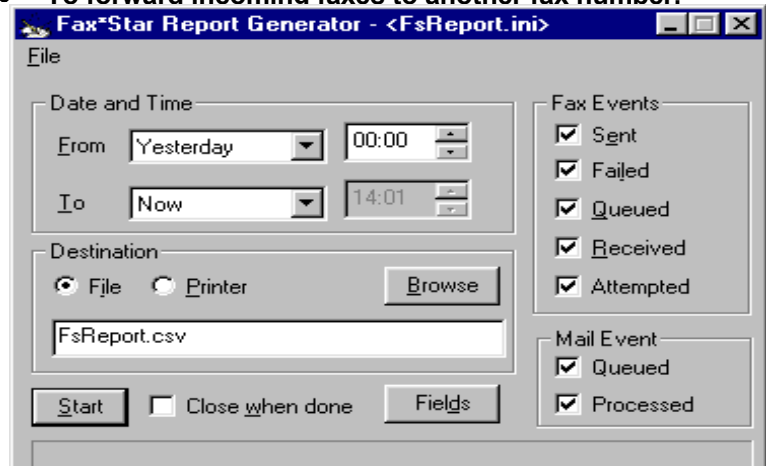
Inbound routing can be performed by capturing the CSID number, DTMF sequence, DID number, or by fax line. Once Fax★Star® has a routing parameter to work with additional information can be gathered from a table on any platform, including Active Directory.

The incoming fax setup allows defining at the user level:

- To keep a copy of incoming faxes in the server in a specific format.
- To mail a copy of incoming faxes in a specific format to a particular e-mail address.
- To send to another server via FTP a copy of incoming faxes in a specific format.
- To print incoming faxes on any printer on the network with a specific acknowledgment stamp.
- To forward incoming faxes to another fax number.



Users can print a report of the traffic. This report can also be created in a CSV file (to be imported to an Excel spreadsheet). Users may select fields they wish to include in this file.



IBM server <sup>TM</sup>

*Fax & Email Automation  
For The World  
"Because Time Is Money"*

**TOOLS  
NETWORK**